

Lab-Guard Series



Lab-Guard Series

Scope of Application

The Lab-Guard ULT freezer can be used for the storage and protection of temperature sensitive samples, vaccines, longitudinal study samples, important medical research samples, valuable pharmaceutical products, clinical trial samples.

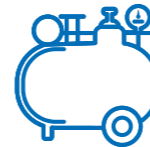
■ Safer by Design



Slim cabinet design for better access



World leading energy saving



World-famous Components



Fast Cabinet Pull Down



Superior temperature recover time



VIP PLUS design



MD-86L458



MD-86L458T



MD-86L458



Safe and Reliable Samples Storage

Superior temperature uniformity; Imported world-famous components.



Double Door Design

Four independent/detachable inner door allows better samples management. And each inner door has gasket which will reduce heat exchange rate and retaining the inner temperature better.



Multi-level Alarms

Alarm functions include high, low temperature, sensor error, power failure, high ambient alarm, door open alarm etc.



Optimized Refrigeration System

High efficiency cooling fans and compressors, combined with hydrocarbon refrigerants, ensure energy savings and long-term sample security.

1 Multi-layer Sealing Structure

Multi-layers gaskets provide a tight seal between the inner doors and outer door, reducing heat exchange rate and retaining the inner temperature better when there is power failure.

2 VIP PLUS Design

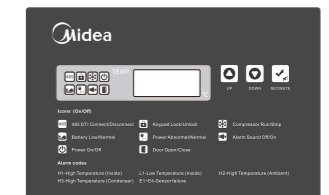
Provides up to 30% more storage capacity than a conventionally insulated freezer, without increasing the footprint. A glass fibre core provides advanced thermal properties.

3 USB Port

Enables users to download historical temperature data for compliance/auditing purposes.

4 LED Display

Alarm functions include high, low temperature, sensor error, power failure, high ambient alarm, door open alarm etc.



5 Lever Handle Design

Ingenious handle design helps you to open and close door easier. Lockable handle safeguards your precious samples. Padlock can also be added for extra sample safety.

6 Heated Pressure Equalization Port

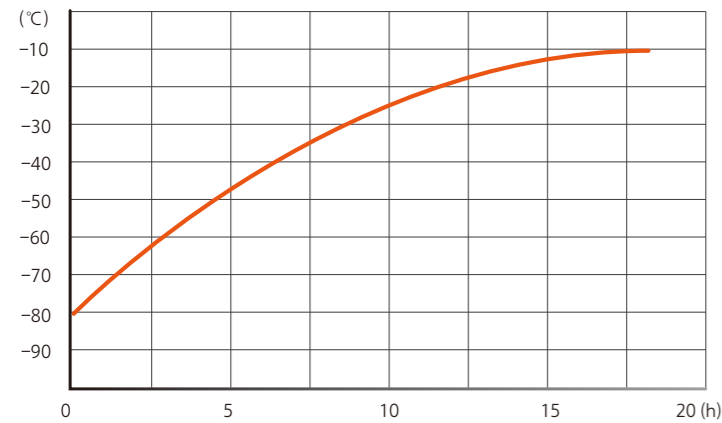
It allows users to re-open the main door quickly when entering, rust-proof, freeze-free.

7 Narrow Door Design

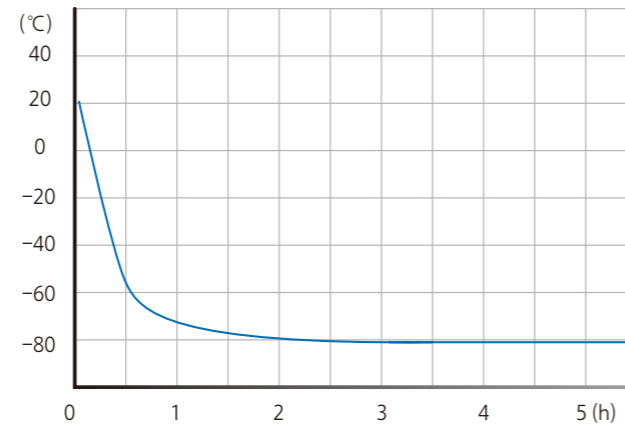
The freezer can pass through an 750mm wide door when the door is open.

TYPICAL PERFORMANCE CHARACTERISTICS AT 25°C AMBIENT

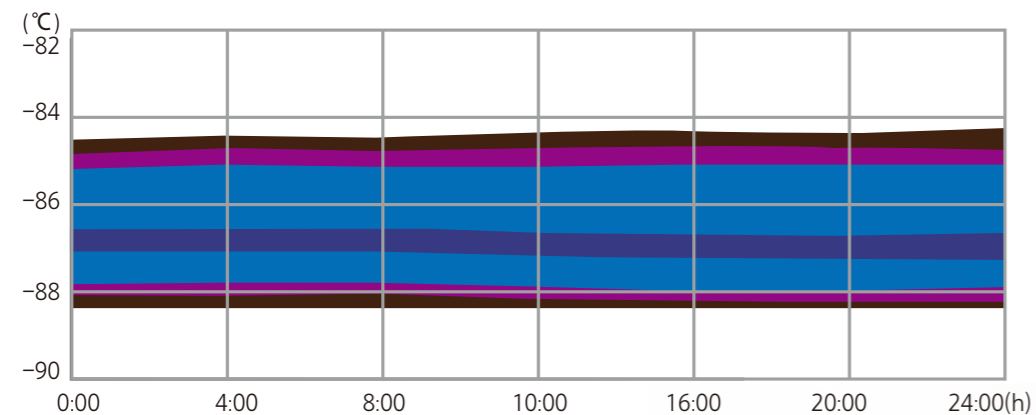
Temperature recover curve



Temperature cool down curve



Temperature uniformity



Item	Model No.	MD-86L458	MD-86L458T
Product Image	Product Image		
Technical Data	Cabinet Type	Upright	Upright
	Climate Class	N	N
	Cooling Type	Direct cooling	Direct cooling
	Defrost	Manual	Manual
	Refrigerant	Mixed refrigerant	Mixed refrigerant
	Total Storage Volume(L)	458	458
	2ml Cryo Tube Qty	32000	32000
	External Material	High quality coated steel	High quality coated steel
	Inner Material	Stainless steel	Stainless steel
	Control	Controller	Microprocessor
Display		LED	Touch Screen
Temperature Accuracy(°C)		0.1	0.1
Temperature Range		-40 ~ -86°C	-40 ~ -86°C
Dimensions	Product Dimensions(mm)(wxdxh)	885*855*1980	885*855*1980
	Interior Dimensions(mm)(wxdxh)	595*580*1310	595*580*1310
Electrical Data	Power Supply	220-240V/50Hz	220-240V/50Hz
Functions	High Temperature Alarm	Y	Y
	Low Temperature Alarm	Y	Y
	Door Ajar	Y	Y
	Power Failure Alarm	Y	Y
	High condenser temperature alarm	Y	Y
	High ambient Temperature Alarm	Y	Y
	Low Battery	Y	Y
	Sensor Failure alarm	Y	Y
	USB Interface	Y	Y
	Door Heating	Y	Y
	Porthole	Y	Y
	Universal Wheel	Y	Y
	Caster	Y	Y

Ihr Fachhändler:
www.axon-labortechnik.de



Axon Labor Technik GmbH
 Im Braumenstück 16 - D-67659 Kaiserslautern
 Verkaufsbüro Tel. 06223/95 41 190 Fax: 06223/95 40 714
info@axon-labortechnik.de